

SDC profile



SDC Trailers LTD, Toomebridge, Co. Antrim



SDC Trailers LTD, Mansfield, England



MDF Engineering, Antrim


Established in 1978, in Toomebridge, Northern Ireland, SDC began by manufacturing trailers and commercial vehicle bodies. Through the acquisition of Neville Charrold in 1994, a specialist tipping trailer manufacturer in Mansfield, Nottinghamshire, SDC expanded both its range of trailers as well as its production facilities onto the UK mainland.

In 1998, SDC became part of Retland Ltd, owners of MDF Engineering of Antrim, Northern Ireland, who themselves were a major supplier to SDC. This has enabled SDC to manufacture not only the trailers, but all the components in-house.

From these three modern and efficient manufacturing facilities, with over 300,000 square feet of production space, the entire design and manufacturing process is under our direct control.

The company is amongst the most modern trailer manufacturing facilities in Europe and fully accredited to ISO 9001/2000.

To fulfil the needs of customers, SDC uses computer aided design utilising technology, which means trailers can be built to individual customers' specifications. The trailers have a number of innovative features, including bolting the body to the chassis rather than welding it. This allows for easy accident repair, meaning the trailer is off the road for the minimum amount of time, saving time and money.

Every trailer comes with a five-year chassis and bodywork warranty and five-year chassis paintwork warranty provided by 

After sales care is a high priority with SDC. A network of service agents throughout the UK & Europe can help you keep your trailer maintained and on the road.

A 24hr emergency call out service has also been established in the UK and Europe. Parts Assist provide same day or next day delivery of genuine manufacturers' replacement parts.

Our aim is to ensure your trailer investment delivers a rapid return and contributes to the profitability of your business for many years into the future.



The company reserves the right to change or update trailer specifications without prior notice. Full warranty details available separately.

design by **xposure**
www.xposure-vc.co.uk • info@x-vc.co.uk

SDC TRAILERS LTD

Bradder Way, Mansfield, Nottinghamshire, England NG18 5DQ
Telephone: +44 (0)1623 625354 Fax: +44 (0)1623 629030

SDC TRAILERS LTD

116 Deerpark Rd, Toomebridge, Co. Antrim, N. Ireland BT41 3SS
Telephone: +44 (0)2879 650765 Fax: +44 (0)2879 650042

Email: sales@sdctrailers.com Website: www.sdctrailers.com



“SDC Box Vans are widely acknowledged to be the most lightweight and practical in Europe.”



Trailers Limited

true choice & quality

There are four standard models in the SDC box van range including our unique ‘snap-lok’ aluminium plank, aluminium riveted, GRP and insulated panel vans plus a full range of temperature controlled equipment. All feature our pioneering bolt-on body concept. This unique form of construction maximises strength, reduces downtime for accident repair and can relieve stress on critical parts of the trailer, extending its working life.

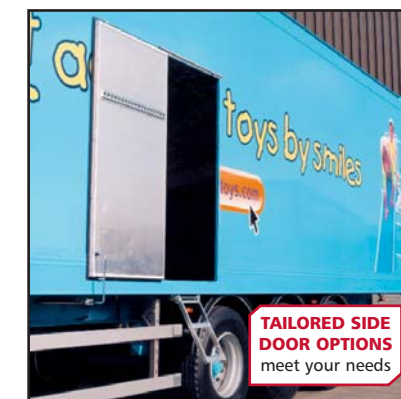
SDC’s production plants at Toomebridge and Antrim in Northern Ireland and Mansfield, England, are the most modern of their kind in Europe and accredited to ISO 9001/2000 standard. With the **entire design and manufacturing process under our direct control**; from the basic steel selection and process right through to fabrication and assembly of all chassis and body components, the exacting standards we set in terms of build quality can be rigorously and consistently maintained.

From a paint finish point of view, our trailer units set the standard in terms of appearance and long-term durability. Using the Nexa autocolour Turbo Plus system, a **technologically advanced 2 pack product over a fully shot blasted and pre-drilled chassis frame**, our trailers will look good longer and enhance residual values.

All of our trailers are built to comply with EEC and UK construction and use regulations.

true features & benefits

Designed to meet current GCW legislation, SDC’s unique ‘snap-lok’ aluminium plank van offers increased wall strength, providing added security, with the option of insulation. If increased payload is more crucial to you, our aluminium riveted van offers the maximum payload. Our GRP box vans are manufactured using highly durable GRP ply and provide an excellent surface for livery application and a clean and hygienic load space. An insulated version is also available. SDC’s dry freight range offers semi-trailer and drawbar versions with single, tandem or tri-axle running gear. Trailer flooring is laid in conjunction with **SDC’s side rail construction** which ensures no water ingress and is rebated onto the ‘I’ beam.



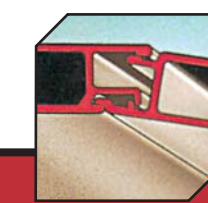
true flexibility

One of the key advantages to investing in an **SDC** trailer is the **level of customisation** we can provide in the build. In addition to an impressive and comprehensive range of options, our ‘state of the art’ engineering departments can work with you to tailor a box van design to perfectly match your application throughout Europe.



- SEALED, COLOUR CODED WIRING LOOM** with sealed connections for lower maintenance. Option of ADR
- TEMPERATURE CONTROLLED EQUIPMENT** tailored to specific requirements
- OTHER OPTIONS INCLUDE** interior lighting, insulation and specialised interior linings

CHASSIS ‘I’ Beam construction	KING PIN 51mm ISO JOST bolt in	ELECTRICS 24 volt to EEC-ISO Standard
AXLES & SUSPENSION 9 or 10 ton Disc or Drum format	BODY Aluminium or 21mm/24mm GRP	PAINT FINISH Nexa autocolour Two pack
FLOOR Lamideck as standard	BRAKES EBS/ABS spring braking system	



- AERODYNAMIC GRP SIDE SKIRTS AVAILABLE**
Enhance road stability and fuel efficiency, reducing your running costs
- ‘SNAP LOK’ ALUMINIUM PANELS**
For maximum strength and ease of replacement
- SPECIALIST GARMENT CARRIAGE OPTIONS**
- BOLT ON FOLDING ALUMINIUM SIDE GUARDS**
- FOLD AWAY STEP LADDER**
Enables easy access to the trailer by the operator

“ All in all, no other company is better equipped to deliver the right box van solution for you. ”